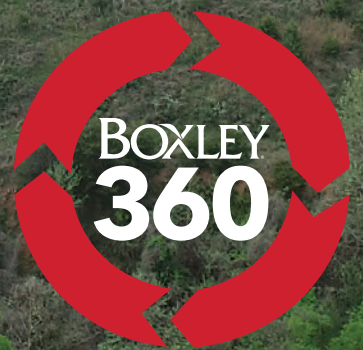




# 2024 CORPORATE RESPONSIBILITY REPORT



# ROCK SOLID RESPONSIBILITY



# A NOTE FROM CLINE DOOLEY, Vice President and General Manager of Virginia

We're proud to share Boxley's 2024 Corporate Responsibility Report with you. This year's theme, *Rock Solid Responsibility*, reflects our team's unwavering commitment to making a meaningful impact in the communities we serve.

Boxley employees are not just producing high-quality aggregate products—they're helping build and maintain the local places where they live and work. From homes and businesses to schools, hospitals, and the roads and bridges that connect us, our materials play a vital role in everyday life.

Being a responsible corporate citizen is at the core of who we are. Through our employee-led **Boxley Team 360 program**, we actively support our communities by volunteering and providing financial and product donations.

Throughout this report, you'll see the many ways the Boxley Team stepped up in 2024 to improve the quality of life in the areas we serve. Our passion and dedication embody the *Rock Solid Responsibility* that has defined Boxley since 1906.

*We're proud of what we've accomplished together—thank you for being part of our journey!*



## Focus Areas

- Safety
- Environmental Stewardship
- STEM and Industry Education
- Community Outreach
  - o Charitable Donations
  - o Volunteerism

## Boxley Team 360

- Jake Gusler**  
Quarry Manager (Blue Ridge Quarry)
- Kara Poole**  
Administrative Business Partner (Support Center)
- Angie Childress**  
VA Agg. Sales Administrator (Blue Ridge Sales Office)
- Stacey Tyler**  
TMT Purchasing Admin (Support Center)
- Daniel Evans**  
Operator III (Lawyers Rd Quarry)
- Edna Hall**  
Scale House Clerk (Fieldale Quarry)
- Josh Wilson**  
QC Manager (Support Center)
- Andy Vassar**  
Safety Manager (Blue Ridge Sales Office)
- Amanda Lesueur**  
Sales / Weighmaster (Arvonias Quarry)
- John Martin**  
QC Technician (Piney River Quarry)

Image (above): Blue Ridge Quarry  
Cover image: Fieldale Quarry

In keeping with our sustainable practices, we largely distribute this report electronically which also makes it easier to share. Visit [boxley.com](https://boxley.com) to view all of our Boxley 360 reports.



We are committed to keeping our employees, customers, and communities safe in all that we do.

2024 Safety  
By the Numbers

62 MSHA inspection days  
and only 1 MSHA-designated  
non-significant citation

**ZERO**

Significant & Substantial  
(S&S) citations

**ZERO**

Recordable Accidents

**401,982** Hours Worked

**ZERO**

Fleet Accidents

**671,085** Miles driven

35 Years without a  
Lost Time Injury

We’re proud of our Lawyers Road Quarry and Western Area Maintenance team members who were recognized in 2024 by the Virginia Department of Energy-Mines and Minerals and the Virginia Transportation Construction Alliance (VTCA) certifying their achievement of over 35 years without a Lost Time Injury (LTI).



Team Members Pictured: From left to right: Ed Kelso, Greg Mosley, Barry Jennings, Richard Wood, Mark Wood. VDOE and VTCA Representatives pictured from left to right: Paul Sanders and Jason Franklin, VDOE, and Rob Lanham, VTCA

Aggregate Producer Safety Award

The safety-driven team at Piney River Quarry earned the Aggregate Producer Safety Award from the Virginia Transportation Construction Alliance (VTCA) for achieving; as of July 3, 2024:

**3,597 days without a  
recordable incident**



**ROCK SOLID**

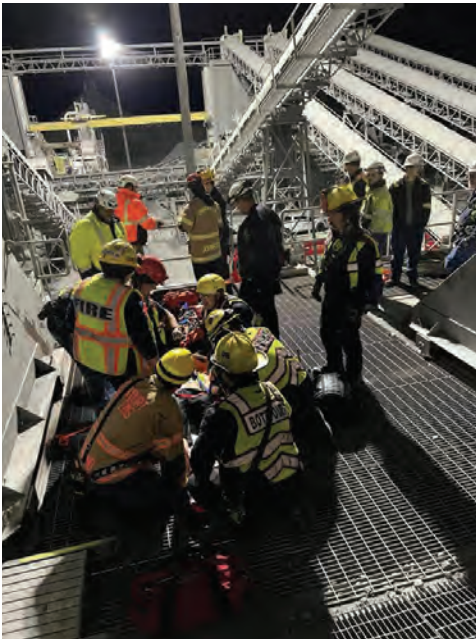
Annually, Boxley employees participate in about 1,600 hours of safety training.

Training is the foundation of our world class safety culture.

Last year, Blue Ridge and Lawyers Road Quarries hosted mock training events for area first responders to simulate extractions from our heavy equipment. The training opportunity allowed emergency crews to sharpen their skills in many different life-saving scenarios.



Botetourt Fire & EMS Department Mock Rescue



Lyn-Dan Heights Volunteer Fire Department Company 15 and Campbell County Public Safety Mock Rescue



Annual Safety Refresher Courses

Boxley provides annual refresher safety courses in areas such as ergonomics and fall safety.



All seven Boxley Quarries participated in the MSHA “Stand Down to Save Lives” event prioritizing miners’ safety and health.



# first responder partnerships

Boxley hosts annual site visits for our local Fire & EMS departments to review our operations and safety protocols. We also make financial and product donations to help support the critical services they provide to our communities.



**Arvonias Quarry**  
Arvonias & Dilwyn Volunteer Fire Departments

**Blue Ridge Quarry**  
Botetourt Volunteer Fire & EMS Department  
Montvale Volunteer Fire & EMS Department  
Blue Ridge Volunteer Fire & EMS Department


**Fieldale Quarry**  
Fieldale Volunteer Fire Department  
Horsepasture Volunteer Fire Department

**Lawyers Road Quarry**  
Lyn-Dan Volunteer Fire Department  
Campbell County Public Safety


**Mt Athos Quarry**  
Concord Volunteer Fire & EMS Department

**Piney River Quarry**  
Piney River Volunteer Fire Department

**Rich Patch Quarry**  
Selma Volunteer Fire Department  
Boiling Springs Volunteer Fire Department



Boxley was proud to support Corey Orange, Bedford Fire Department Lieutenant and Boxley Electrician, who climbed 110 flights of stairs to honor the FDNY firefighters who lost their lives on 9/11 and raise money for the Fallen Firefighters Foundation.




**Stone Donation Bedford Fire and Police Training Center**

Blue Ridge Quarry donated 51 tons of stone for facility improvements. The training center is used by area fire departments and law enforcement and hosts classes for volunteer firefighters from across the state.

# environmental stewardship



Mt. Athos Quarry employees collected 78 bags of trash and 80 tires at their annual clean up event.



Fieldale Quarry employees upheld their longtime participation in the annual Smith River Cleanup.



Arvonias Quarry employees collected 22 bags of trash along their adopted section of Route 15.



Blue Ridge Quarry partnered with Heritage Apiary to establish three beehives on the property. It's a win-win as bees benefit from our polinator garden and our neighbors enjoyed jars of honey this past holiday season.






**Recycling Report Card**

Recycled Oil **1,225 Gallons**

Recycled Filters **2,100lbs**

Recycled Paper **5,050 lbs.**



Our aggregate operations help reduce the use of fresh water by capturing rainwater and channeling stormwater runoff into the quarry pits. Water from these closed-loop water recycling systems is used for stone washing, washout, dust suppression and truck wheel washing.



**ROCK SOLID**

Once a quarry stops production, the site can be reclaimed and converted to another beneficial use. Depending on the site, some potential options include a wildlife sanctuary, reservoir, park, development, or agriculture.



# stem and industry education


## Our Quarries Offer Unique Learning Opportunities

Boxley supports STEM education initiatives and through our community outreach works to educate the public about the critical role aggregate and aggregate products fill in everyday life.



Lynchburg Gem & Mineral Club visited our Mt. Athos and Blue Ridge quarries searching for gems and crystal forms of minerals. They struck the jackpot with a Fluorite crystal at the Blue Ridge Quarry.





### ROCK SOLID

Quarry operations require engineers, geologists, hydrologists, accountants, chemists, and IT specialists, and others from STEM-related fields.

# stem and industry education

Fieldale Quarry: Virginia Tech Geoscience students studied the Earth's Critical Zone.



Lawyers Road Quarry  
Lynchburg University Environmental Geology students learned about the quarry's rock deposit and operations.



Mt Athos Quarry  
United States Geological Survey (USGS) representatives examined former manganese mine sites on the property.



Arvonnia Quarry College of William & Mary's Department of Geology students collected slate samples to analyze isotopes to determine original rock formation.



### Explore the Earth School Tours

7 area elementary schools participated in our geology presentation and quarry tour which meets Virginia's 5th-grade SOL standards.





The National Stone, Sand & Gravel Association recognized all 7 Boxley quarries with the 2024 Community Relations Excellence Award.

Arvonía brought home the prestigious GOLD Award and Blue Ridge, Fieldale, Lawyers Road, Mt. Athos, Piner River and Rich Patch earned Bronze.

Pictured: Boxley Area Aggregate Manager, Spencer Young, and Administrative Business Partner, Kara Poole at the NSSGA Awards Luncheon in Washington, D.C.

Boxley donated \$10,000 to support the 2024-2025 Science Outreach Partnership with the Virginia Museum of Natural History.

86 school programs  
reaching 1,623 students

54 programs  
for 1,350 homeschool students



2024 Boxley Community Donations

Financial Donations:  
\$143,160.75

Product Donations:  
\$26,360.26

2024 United Way Corporate Pledge:  
\$30,013.68

\$15,006.84 Employee Pledge  
+  
\$15,006.84 Company match



**ROCK SOLID**

Boxley and our employees have supported the United Way for 101 years.

Rock Solid School Supply Drive

Boxley Team Members earned straight A's for generosity and full participation with all seven quarries donating school supplies to their local elementary schools during the 2024 Rock Solid School Supply Drive.



- Arvonía Quarry-Buckingham County Preschool and Primary School
- Blue Ridge Quarry-Colonial Elementary School
- Rich Patch Quarry-Sharon Elementary School
- Piney River Quarry-Temperance Elementary School
- Fieldale Quarry-Stanleytown Elementary School
- Lawyers Road Quarry-Rustburg Elementary School
- Mt Athos Quarry-Appomattox Elementary School

**CraveABLEs**

Lawyers Road Quarry donated parking lot stone for CraveABLEs, an ice cream shop providing support and employment opportunities for people with intellectual disabilities.





Tackling Food Insecurity

Boxley employees are addressing hunger in our communities by partnering with local nonprofits to provide food to those in need. Our employees volunteered at The Lynchburg Daily Bread and the Rescue Mission of Roanoke. Throughout the school year, Boxley partnered with Food for Kids to support food-insecure students in Bedford.



Lynchburg Daily Bread



Rescue Mission of Roanoke



Food for Kids – Bedford

ROCK SOLID

Boxley Team 360 is a group of passionate and dedicated employees who lead our community volunteer and employee engagement efforts.

United Way Day of Action Roanoke

Our Roanoke team helped with landscaping at the YMCA of Gainsboro, a longtime organization providing opportunities for community health and wellness.



United Way of Central Virginia's Day of Caring in Lynchburg

Our Lynchburg Team performed maintenance at Miriam's House, a shelter for women and families.



United Way Day of Action Martinsville

Our Martinsville Team performed trail maintenance for Tactfully Teamed, a therapeutic horseback riding organization for individuals with disabilities.







# supporting our veterans



As a strong supporter and employer of military service members and veterans, Boxley and our team members engage in activities in recognition of their service.

Boxley team members volunteered with **Wreaths Across America** to place 1460 wreaths on the graves of veterans in Bedford in remembrance and honor of their service.

Congratulations to **Josh Favaro**, a valued Civil Engineer at Boxley and Major in the Virginia National Guard, for earning the prestigious Expert Soldier Badge last year at Fort Walker, Va. He is the first soldier to earn this distinction while serving in the Virginia National Guard.



## Veteran's Day 2024



## ROCK SOLID

Aggregate is used in the manufacture of glass, high temp refractory products, cement, fireproofing, toothpaste, kitty litter, and water treatment.

# rock solid insights



Quarries provide the essential raw materials found in every home, building, road, bridge and public works project.

Aggregate makes up over 90% of asphalt pavement.

Aggregate makes up to 80% of concrete mixtures.

38K tons of aggregates are in every mile of highway.

An average sized home requires roughly 400 tons of aggregate to construct.

Image: Lawyers Road Quarry



To learn more about Boxley or for a list of aggregate products by location, visit [boxley.com](http://boxley.com).

**Arvonja Quarry**

715 Arvon Road  
Arvonja, Va 23004  
Phone: (888) 278-6642

**Mt. Athos Quarry**

1299 Stage Road  
Concord, VA 24538  
Phone: (434) 239-9249

**Blue Ridge Quarry**

15415 W Lynchburg Salem Turnpike  
Blue Ridge, VA 24064  
Phone: (540) 947-2211

**Piney River Quarry**

739 Warrick Barn Road  
Arrington, VA 22922  
Phone: (434) 239-9249

**Fieldale Quarry**

3785 Carver Road  
Martinsville, VA 24112  
Phone: (540) 947-2211

**Rich Patch Quarry**

7612 Rich Patch Road  
Low Moor, VA 24457  
Phone: (540) 947-2211

**Lawyers Road Quarry**

762 Lawyers Road  
Lynchburg, VA 24501  
Phone: (434) 239-9249

**Boxley Materials Company (Support Center)**

15418 West Lynchburg Salem Turnpike  
Blue Ridge, Virginia 24064  
Tel: (800) 442-8878 or (540) 777-7600  
Email: [contact@boxley.com](mailto:contact@boxley.com)

**Keep up with all of the news at Boxley!**

Facebook: <https://www.facebook.com/BoxleyMaterialsCompany/>

LinkedIn: <https://www.linkedin.com/company/boxley-materials>

Instagram: [https://www.instagram.com/boxley\\_materials/](https://www.instagram.com/boxley_materials/)

# BOXLEY®